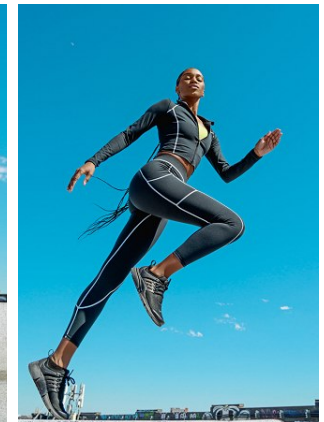
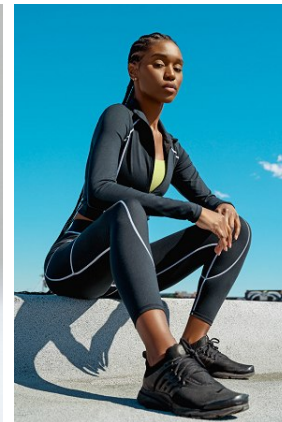
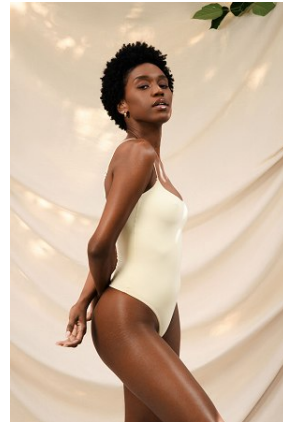
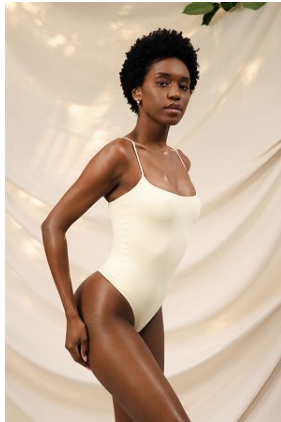
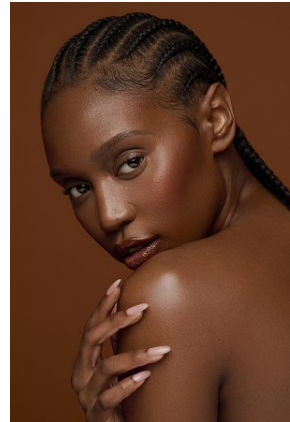
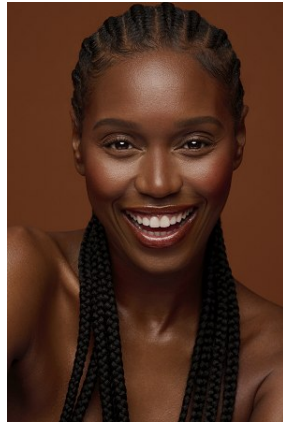
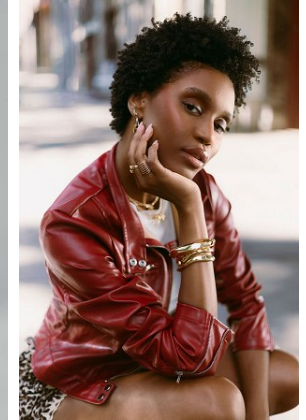


KIARA AILENE

Height: 5'9" Bust: 32" B Waist: 25" Hip: 36" Dress: 4 US Shoe: 9 US Hair: Dark Brown Eyes: Dark Brown





HOW TO USE

Apply directly to edges, temple and nape area and massage into hair and scalp. Leave in and style as usual. Use twice daily for best results.

