



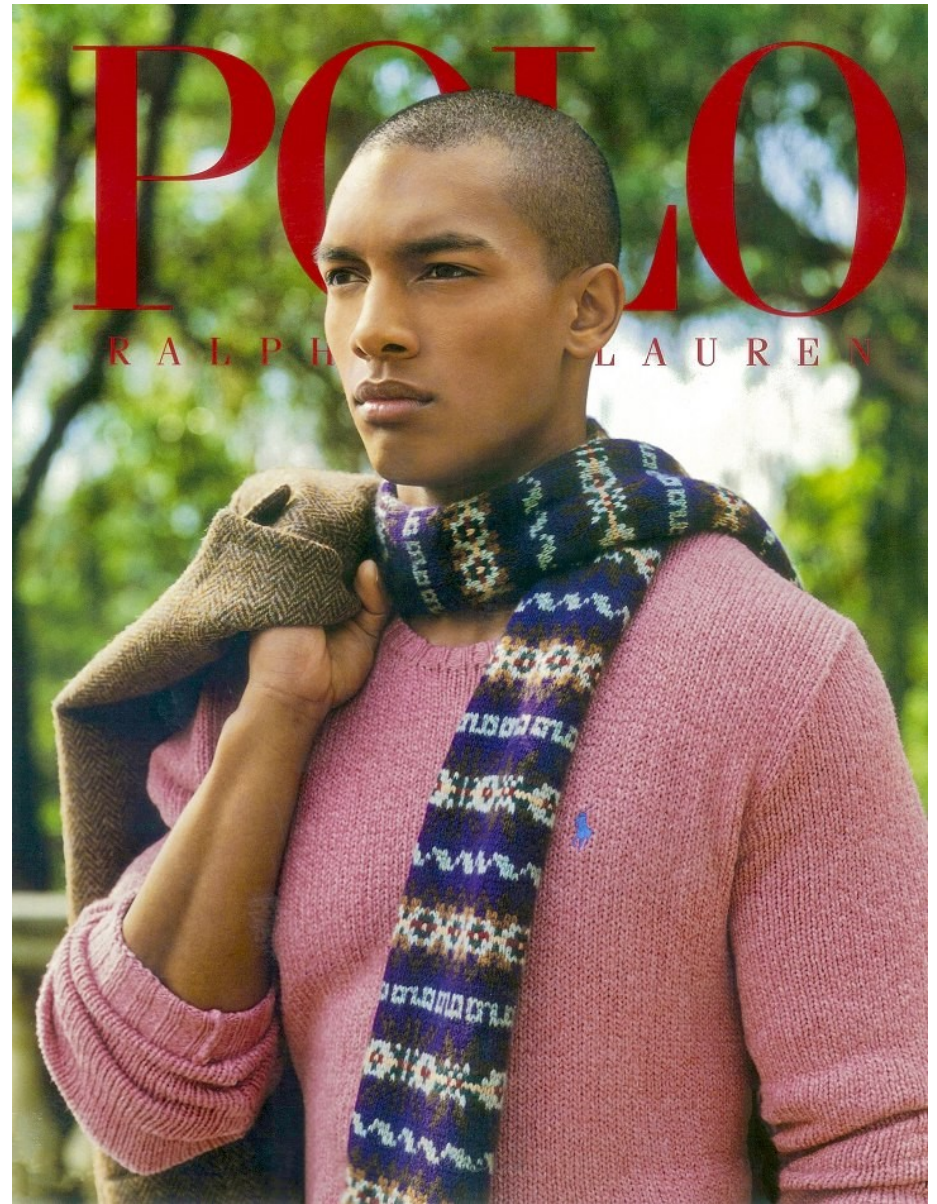
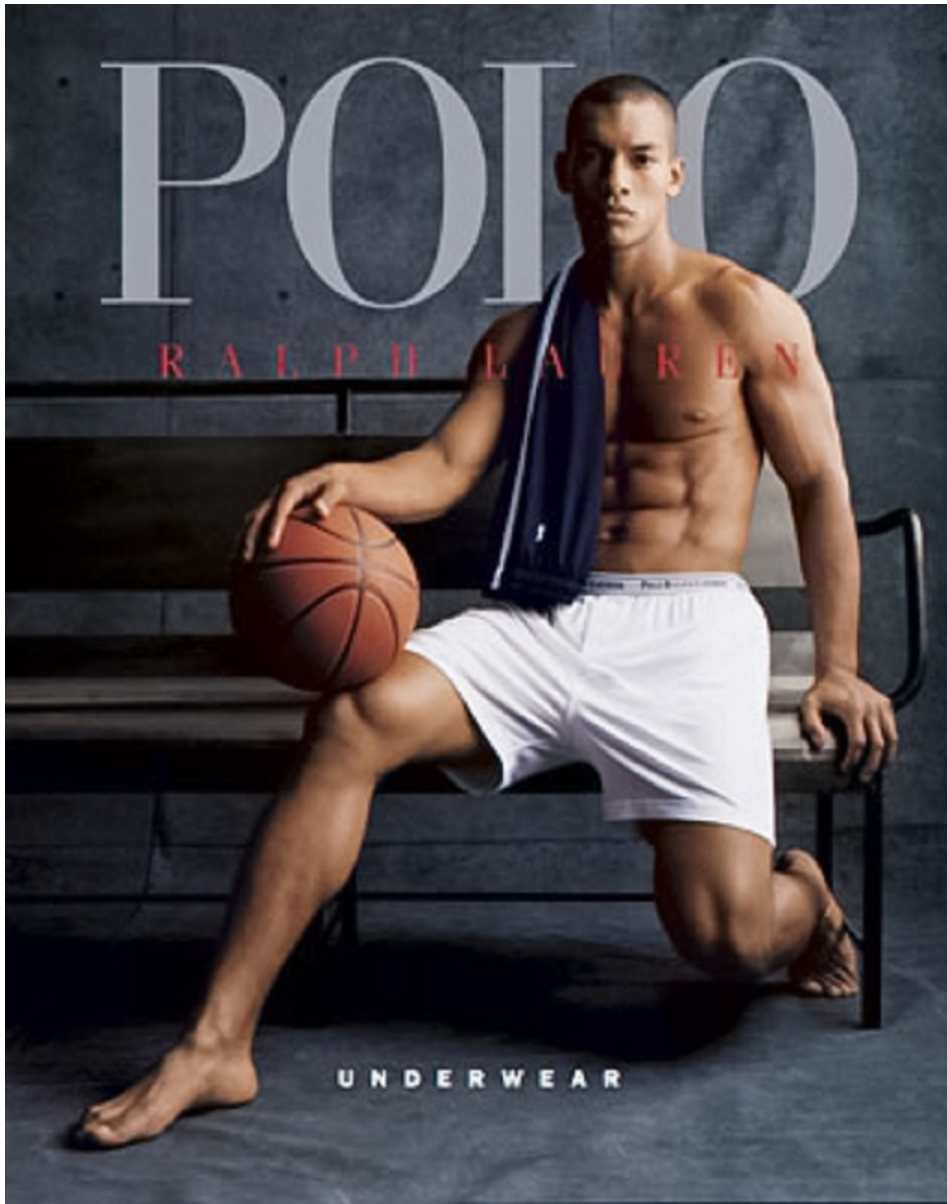
TRAVONE HILL

Height: 6'0"   Waist: 32"   Collar: 15"   Suit: 40   Shoe: 11 US   Hair: Black   Eyes: Brown



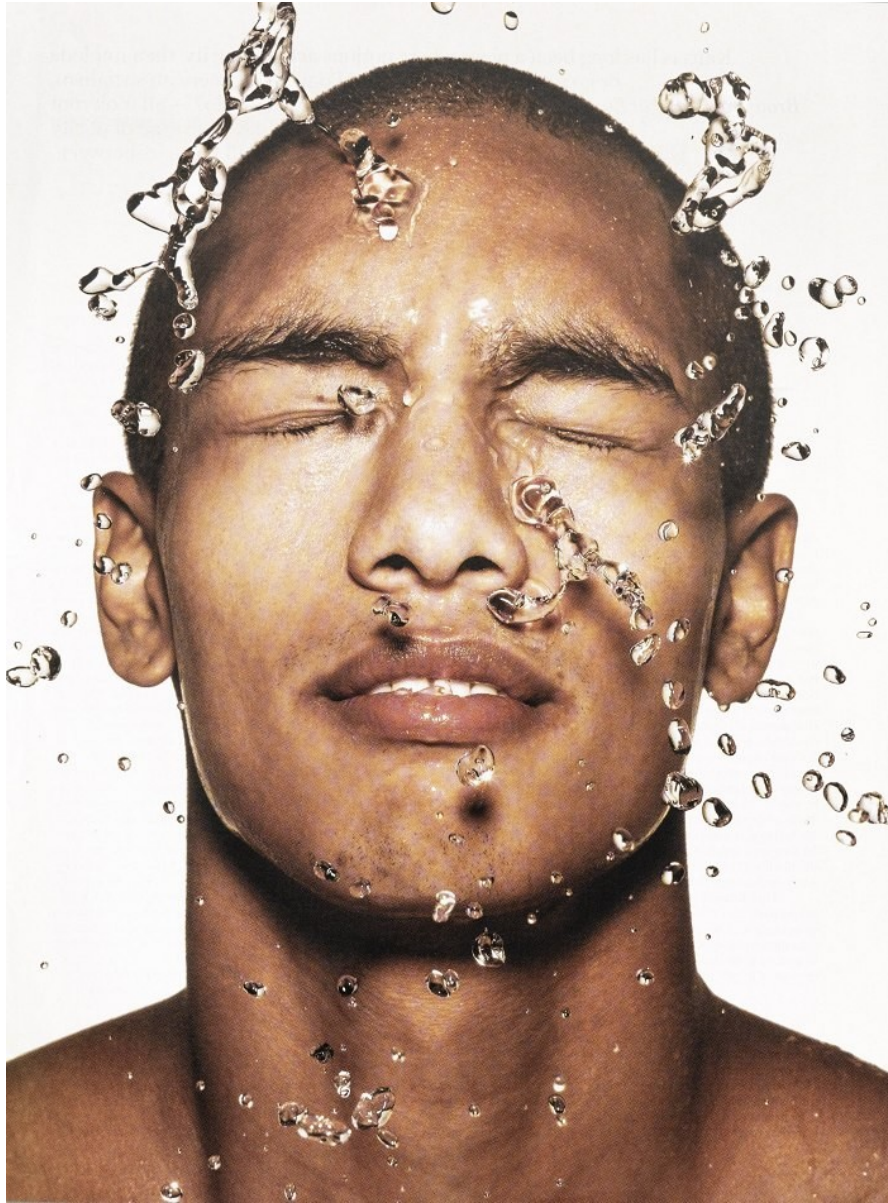
TRAVONE HILL

Height: 6'0" Waist: 32" Collar: 15" Suit: 40 Shoe: 11 US Hair: Black Eyes: Brown



TRAVONE HILL

Height: 6'0" Waist: 32" Collar: 15" Suit: 40 Shoe: 11 US Hair: Black Eyes: Brown



>THE RIGHT WAY TO SHAVE

> If you've ever gotten a proper shave at a barbershop, you know that your face isn't supposed to feel (or look) like it can fire afterward. We asked Jean-Pierre Mastey, the 38-year-old president of Baxter of California, a top men's grooming line, to explain how to get a six-worthy shave every day from the comfort of your own sink—without being incredibly late to work.

**"Either take a hot shower or apply a hot, wet towel to your face for thirty seconds.** This will open up your pores, making whiskers softer and easier to cut. Personally, I think you should stay away from shaving foams, because they're mostly air and they don't do a very good job at lubricating. Instead, use a cream or a gel—they offer a better protective barrier between the blade and your skin. And when you do apply it, leave it on the skin for about a minute. This lets the formula really go to work on softening the beard.

**"When it comes to a razor, keep it clean and sharp.** Gillette's Mach3 is a good three-blade, but guys with sensitive skin should try the Gillette Sensor, a two-blade. It creates less drag on the skin. If you're prone to razor burn and ingrown hairs, shave in the direction of the hair growth. When you're done, splash cool water on your face to help close the pores and soothe the skin. Then pat your face with a towel.

**"Finally, use an alcohol-free aftershave balm with soothing ingredients like tea-tree oil.** Scent is a personal issue, but you should know that highly fragranced aftershaves can cause irritation to your skin. If you feel any burn right away, you should try a medicated postshave lotion, like ours, Baxter's Razor Bump Repair (\$18.50). This whole shaving process should take three to four minutes. Any longer than that and your girlfriend will be pounding on the bathroom door."

—AS TOLD TO STEPHANIE DAVIS

TRAVONE HILL

Height: 6'0" Waist: 32" Collar: 15" Suit: 40 Shoe: 11 US Hair: Black Eyes: Brown



## TRAVONE HILL

Height: 6'0" Waist: 32" Collar: 15" Suit: 40 Shoe: 11 US Hair: Black Eyes: Brown